

# Asset Managers

An efficient and transparent way to minimize risk exposure, increase yield and streamline operations

## Key Benefits

- Centralized in treasury and portfolio finance in an integrated platform
- Connectivity to counterparties to aggregate data across cash, collateral, margin, securities finance, and rates to ease operational burden, increase transparency and tighten controls
- Automated algos to minimize fees and increase yield



Best Execution Data



Deliver Treasury P&L



Integrated Workflows



Streamlined Treasury Operations

## Key Facts

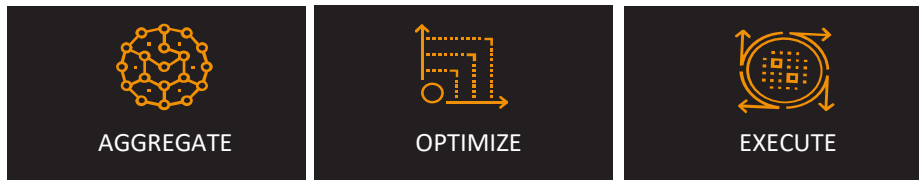
**2011** – Hazeltree founded

**\$2.5 Trillion** – Total Assets Under Advisory

**200+** – Clients including some of the world’s largest asset managers

Hazeltree provides innovative cloud-based treasury solutions to investment management firms, delivering enhanced transparency, liquidity, improved performance and risk mitigation.

Hazeltree’s Asset Management solution is a purpose-built Treasury and Portfolio Finance platform that aggregates cash, collateral, margin, securities finance, and rates data across all counterparties into a central normalized platform, enabling optimal funding, collateral allocation and borrow/lending decisions. Hazeltree’s independent agreement-based internal view reconciles to counterparty data, highlighting breaks, while minimizing risk exposure and optimizing fees. Hazeltree’s integrated workflow and execution engine streamlines treasury operations functions.



**AGGREGATE**

Hazeltree aggregates all relevant data needed for cash, collateral, margin, securities finance, rates.

**OPTIMIZE**

Hazeltree generates suggested actions to add yield, save money and mitigate risk.

**EXECUTE**

Hazeltree enables full control of all cash, FX, securities transfers, locates, and money market transactions.

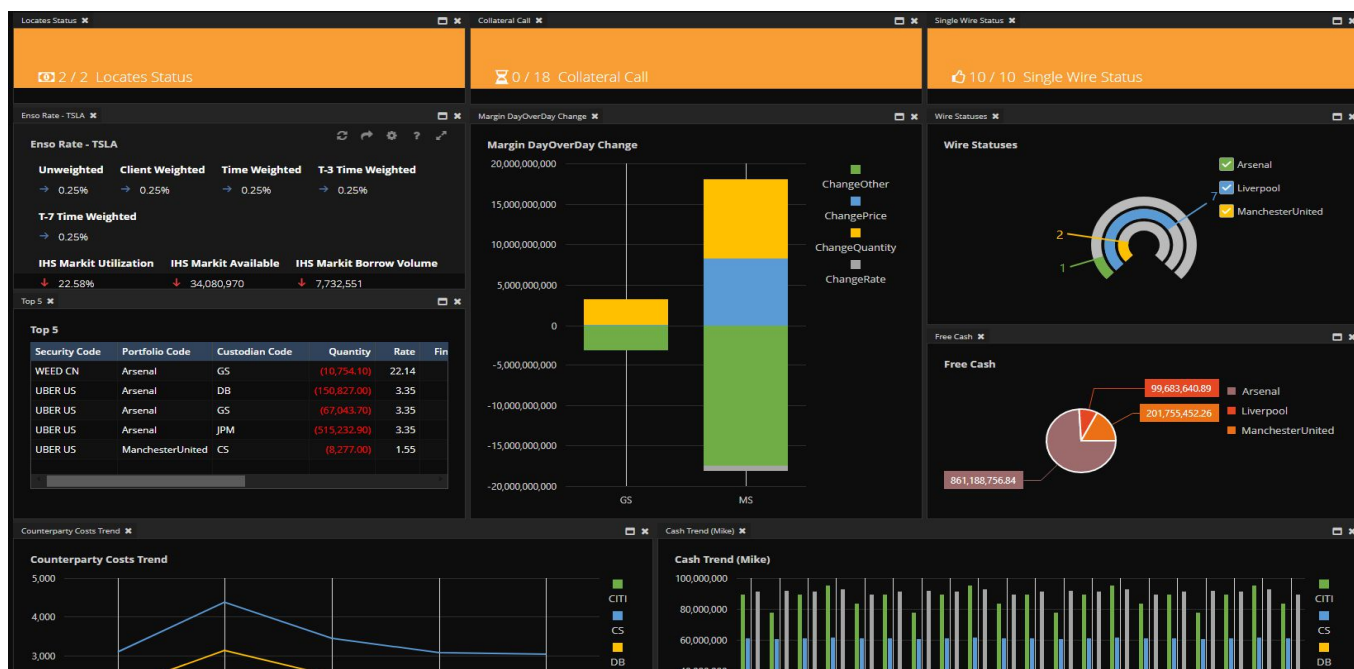
## Transparency and Efficiency for tighter Counterparty Management

- Reduce borrow costs and increase lending revenue with community-based HT Enso rate insights.
- Manage Securities Lending & Borrowing Rates and Renegotiations.
- Manage asset-based financing tiers and optimally allocate positions.
- Effectively reconcile and dispute collateral requirements and efficiently recall excess collateral.
- Minimize margin requirements through data-driven analysis.
- Identify borrowing and lending optimization opportunities based on community-based HT Enso rates.
- Tightly manage and track counterparty exposure and health and analyze wallet and ROA.
- Maximize efficiency and returns with measurable treasury P&L.
- Manage counterparty agreements across ISDAs and Prime Brokers.
- Centralize cash into a single view to easily analyze and offset credit/debits and sweep excess cash.
- Strengthen controls over treasury and cash functions.
- Create a single banking portal to consistently wire money without logging into multiple banking portals.
- Improve operational efficiencies with integrated reconciliation capabilities for cash, positions, securities, and transaction.

# Convert Operational Complexity across cash, collateral, margin, securities finance and rates into Powerful Simplicity

- **Dashboard View and Analysis for all Available Liquidity**, in all currencies across all counterparty relationships.
- **Wire Movements and Payments** to streamline wires and gain control over cash movement.
- **Cash Management and Optimization** to optimize cash and liquidity through Hazeltree's automated Algos and be able to earn incremental yield.
- **OTC Collateral Management** to automate collateral management workflow and meet the Uncleared Margin Rules and Standard Initial Margin Model (UMR and SIMM) mandates.
- **Prime Broker Margin Management** to get an aggregated analysis of prime broker margin requirements at a summary and detail level.
- **Automated Cash Sweeps** to a network of money market liquidity providers to select the best rates and diversity risk.
- **Market Color and Data Analytics** to provide post-trade market color including security crowdedness, concentration, position changes, sector and industry changes, rates, and confidence scores for each trading day.
- **Securities Finance, Rate Transparency, and Optimization** to minimize borrow costs with efficient workflow tools.
- **Securities Transfer** to automate securities movement with a single click.
- **Counterparty Exposure, Health, and Wallet Management** to get full visibility over your counterparties' fees and detailed analysis of counterparties across various metrics.
- **FX Hedge** to monitor exposure-based thresholds and suggests FX trades to hedge currency exposure at the underlying position level.
- **Cash Reconciliation** to streamline cash, positions and securities reconciliation process.

## Business Intelligence Analytics and Reporting



**HAZELTREE**

NEW YORK | LONDON | HONG KONG



Contact your Hazeltree sales representative for more information:

[info@hazeltree.com](mailto:info@hazeltree.com)

Hazeltree provides innovative cloud-based treasury solutions to investment management firms, delivering enhanced transparency, liquidity, improved performance and risk mitigation.

Hazeltree's treasury and portfolio finance technology solutions serve hedge funds, asset managers, private equity funds, private debt, real estate funds, infrastructure funds, pensions and endowments, and their service providers. Hazeltree is headquartered in New York, with offices in London and Hong Kong. For more information, please visit [www.hazeltree.com](http://www.hazeltree.com)