

Hazeltree Securities Finance™

HAZELTREE

A centralized view of all securities borrow and loan operations in one single platform

Can you easily locate, move securities and achieve best execution?

Hazeltree provides innovative cloud-based treasury solutions to investment management firms, delivering enhanced transparency, liquidity, improved performance and risk mitigation.

Hazeltree is a flexible and modular solution that offers best-of-breed treasury management capabilities, including cash, liquidity, collateral, securities finance, and analytics solutions. Our advanced technology provides the most efficient methods to increase scale, manage liquidity, and realize revenue opportunities.



\$2+ Trillion

Total assets under advisory



45,000+

Securities with market data



5+

Years historical data



20+

Prime brokers

Hazeltree Securities Finance™ provides unique market color and rate transparency across counterparties to seize alpha generating opportunities and seamlessly manage stock borrow and lending rates and positions.

Asset managers and hedge funds can access a diverse pool of aggregated global multi-asset class securities through their counterparties, locate securities, compare rates, and select the best projected revenue opportunities. Hazeltree Securities Finance helps understand true treasury and portfolio finance P&L – by allocating borrowing costs to individual positions and integrating into your G/L application, managing short positions across prime brokers and tracking pre-borrow inventory.

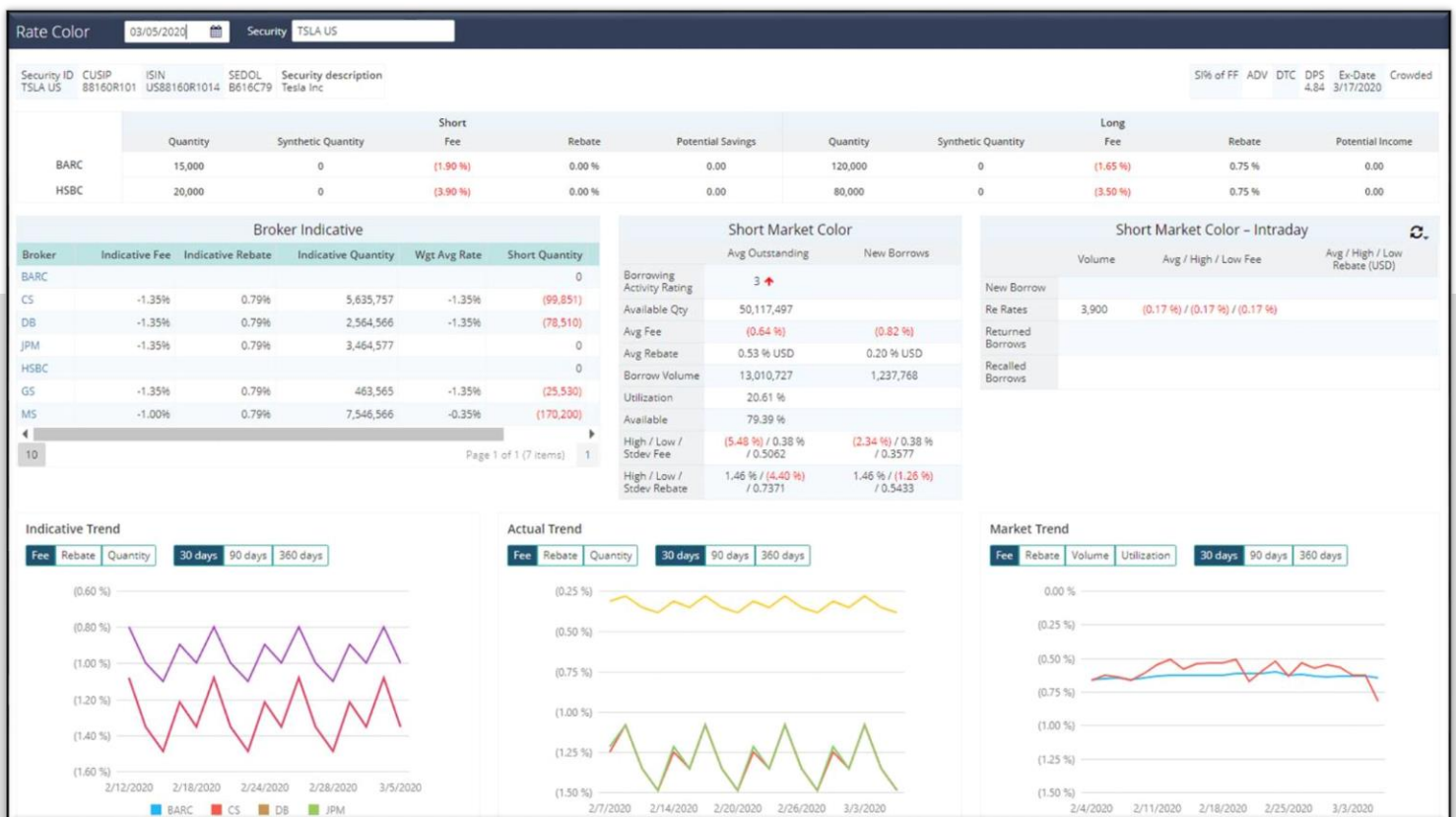
Clients benefit from transparency, automated analytics, reduced risk and exposure, and greater performance opportunities.

- **Broad Connectivity:** Direct connectivity to broker dealers to import detailed rate information and conduct locates.
- **Greater Transparency and market color:** Easy comparison of your prime broker rates vs the benchmarks.
 - Global securities lending market data
 - Intraday data points
 - Top long and short position
 - Top sector and industry movers
 - Top security rate changes
- **Unparalleled Efficiency:** Single-click securities transfers. Integrated locates. Centralized view of all operations in one single platform
- **High Scalability:** Streamlined portfolio finance operations with straight-through-processing.

Full Transparency and Better Efficiency

Hazeltree Securities Finance™ includes the following key features:

- Flexible dashboard views
- Real-time integrated connectivity for locates
- Borrow rate benchmarking
- Securities lending and repo financing analytics
- Unique market color and data analytics
- One-click securities transfers
- Custom integrations and workflow
- Counterparty exposure and Risk Metrics
- Broker Gross and Net Wallet Share



HAZELTREE

NEW YORK | LONDON | HONG KONG



Contact your Hazeltree sales representative for more information:

info@hazeltree.com

Hazeltree provides innovative cloud-based treasury solutions to investment management firms, delivering enhanced transparency, liquidity, improved performance and risk mitigation.

Hazeltree's treasury and portfolio finance technology solutions serve hedge funds, asset managers, private equity funds, private debt, real estate funds, infrastructure funds, pensions and endowments, and their service providers. Hazeltree is headquartered in New York, with offices in London and Hong Kong. For more information, please visit www.hazeltree.com