

Hazeltree Reconciliation Manager™

A Single Platform to Manage Reconciliation

HAZELTREE

Are you actively reconciling and optimizing your cash, positions, and transactions?

Hazeltree provides innovative cloud-based treasury solutions to investment management firms, delivering enhanced transparency, liquidity, improved performance and risk mitigation.

Hazeltree is a flexible and modular solution that offers best-of-breed treasury management capabilities, including cash, liquidity, collateral, securities finance, and analytics solutions. Our advanced technology provides the most efficient methods to increase scale, manage liquidity, and realize revenue opportunities.

Hazeltree Reconciliation Manager™ delivers an automated reconciliation engine that facilitates auto matching and exception processing.

Reconciliations – across account, security position, cash, and transaction levels – can easily be maintained and tracked through a centralized dashboard. Clients can effectively monitor the position level data of their “left side and right side”, comparing internal books to external counterparties, and report any breaks.

- **Greater Transparency:** Centralized view of reconciliation activity across account, cash, position, transaction, and security.
- **Centralized Dashboard:** Centralized dashboards to track and resolve breaks.
- **Unparalleled Efficiency:** Efficient way to track unresolved breaks, map positions, and maintain aging of items. Easy auto-matching and exception processing.
- **Automated Actions:** Unlimited, automated matching between any two data sources



\$2+ Trillion

Total assets under advisory



200+

Global buy-side clients



100,000+

Reconciliations processes daily



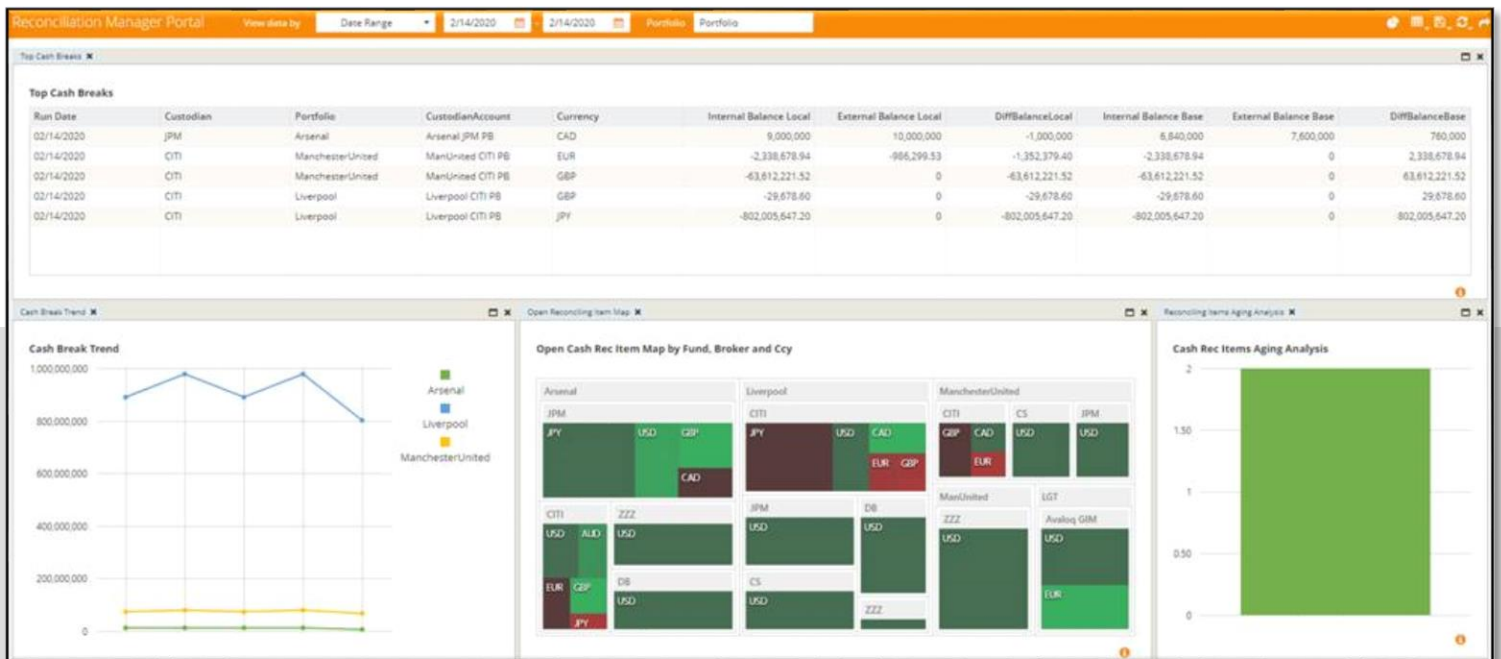
150+

Banks, custodians, &
broker dealers

Centralized and Extended View of The “Left and Right Side”

Hazeltree Reconciliation Manager includes the following key features:

- Centralized dashboard to follow recon’s status across account, security, cash, and transaction levels
- Dedicated screens to track breaks, map positions, and view management summary
- A “left and right side” view of matches and potential matches
- Automatic matchup between any two data sources



HAZELTREE

NEW YORK | LONDON | HONG KONG



Contact your Hazeltree sales representative for more information:

info@hazeltree.com

Hazeltree provides innovative cloud-based treasury solutions to investment management firms, delivering enhanced transparency, liquidity, improved performance and risk mitigation.

Hazeltree’s treasury and portfolio finance technology solutions serve hedge funds, asset managers, private equity funds, private debt, real estate funds, infrastructure funds, pensions and endowments, and their service providers. Hazeltree is headquartered in New York, with offices in London and Hong Kong. For more information, please visit www.hazeltree.com